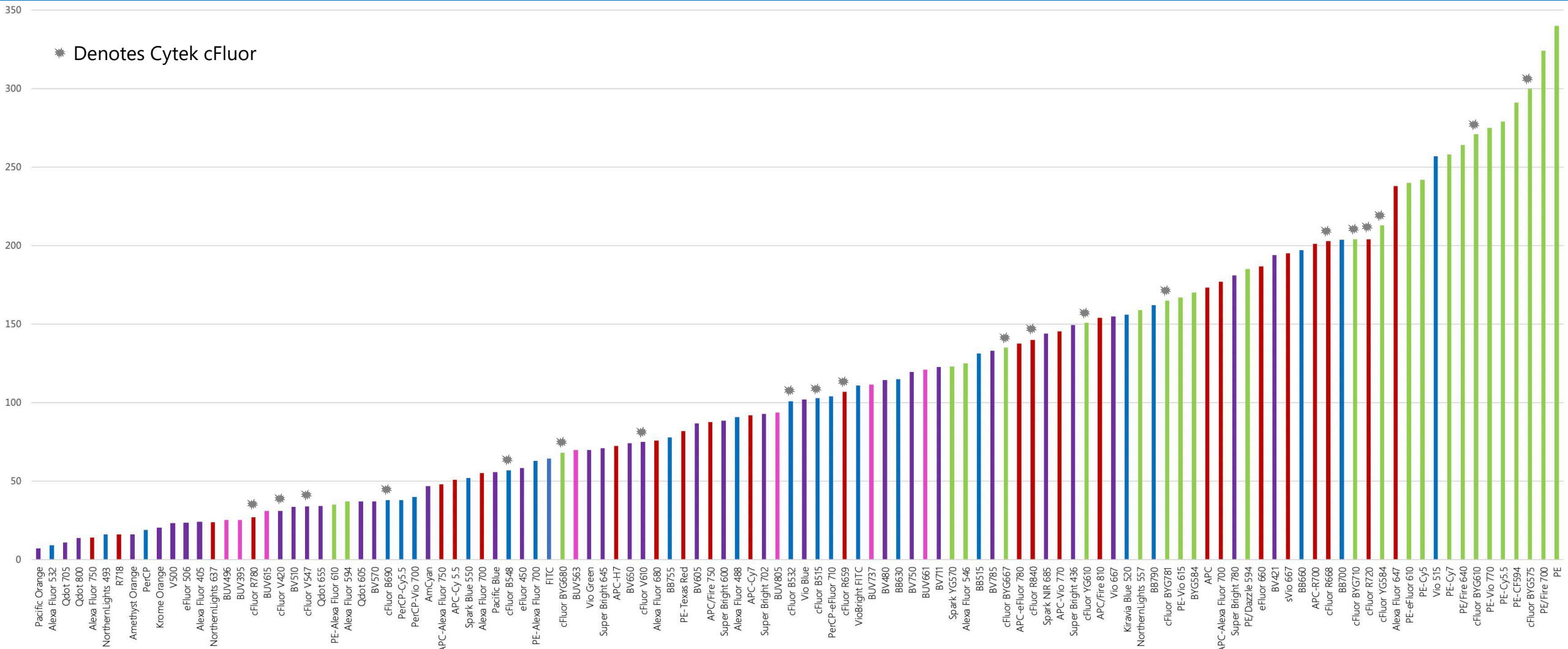




**CYTEK**  
TRANSCEND THE CONVENTIONAL

# Cytek® Aurora cFluor™ Selection Guidelines 5 Laser 16UV-16V-14B-10YG-8R

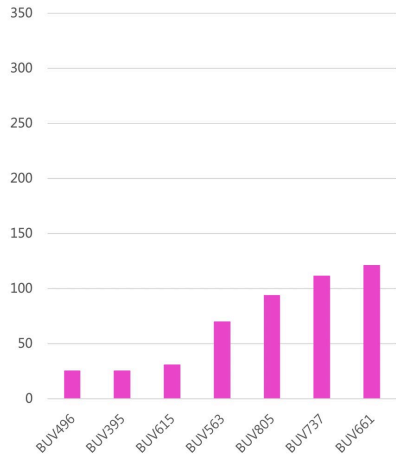
# Stain Index Ranking: 114 Dyes



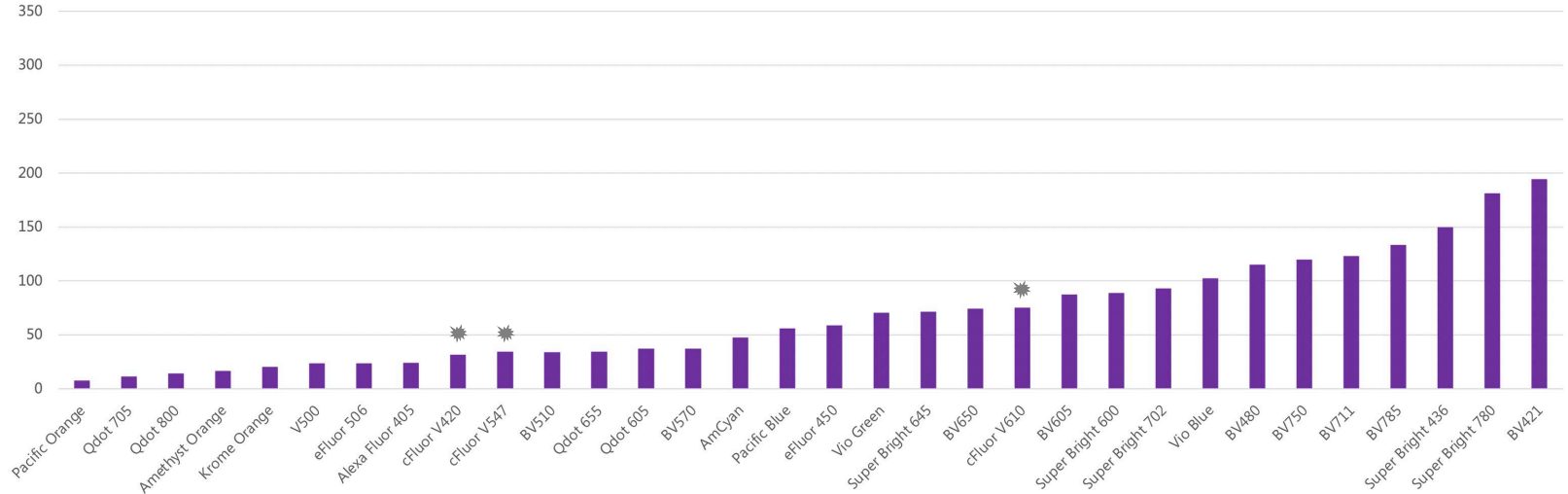
Bars are color-coded by primary excitation laser(s): UV, Violet, Blue, Yellow-Green, Red

# Stain Index by Primary Excitation Laser

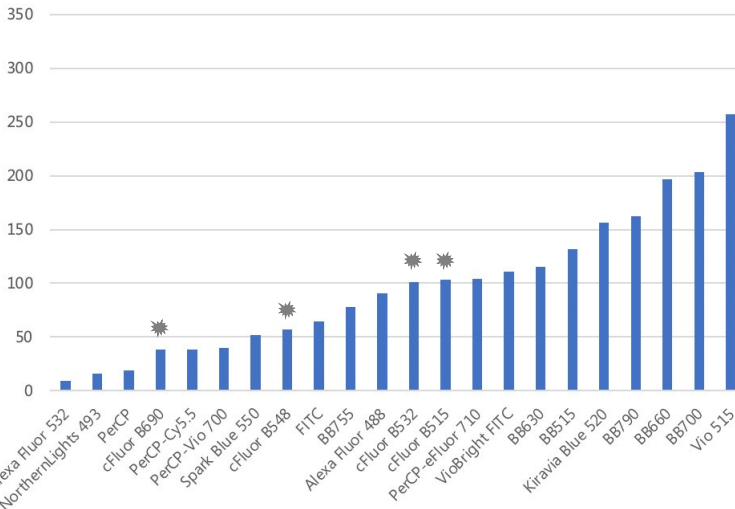
## Stain Index UV Excitable Dyes



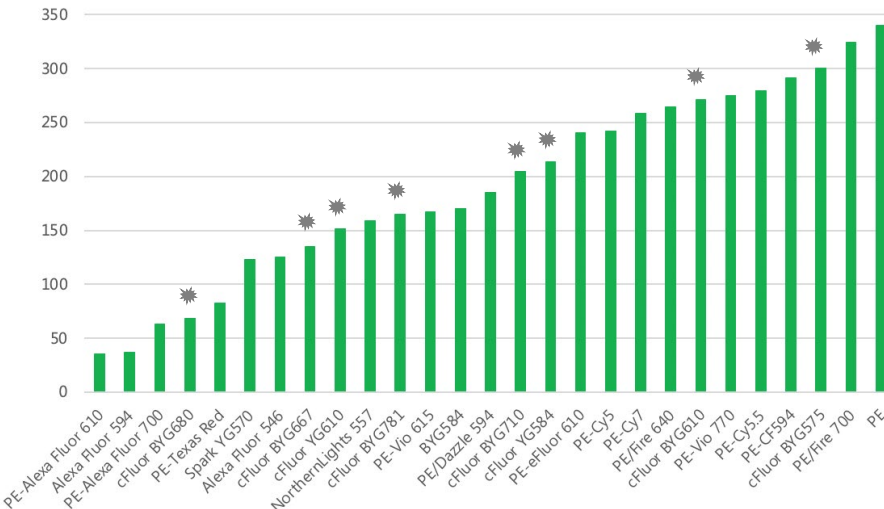
## Stain Index Violet Excitable Dyes



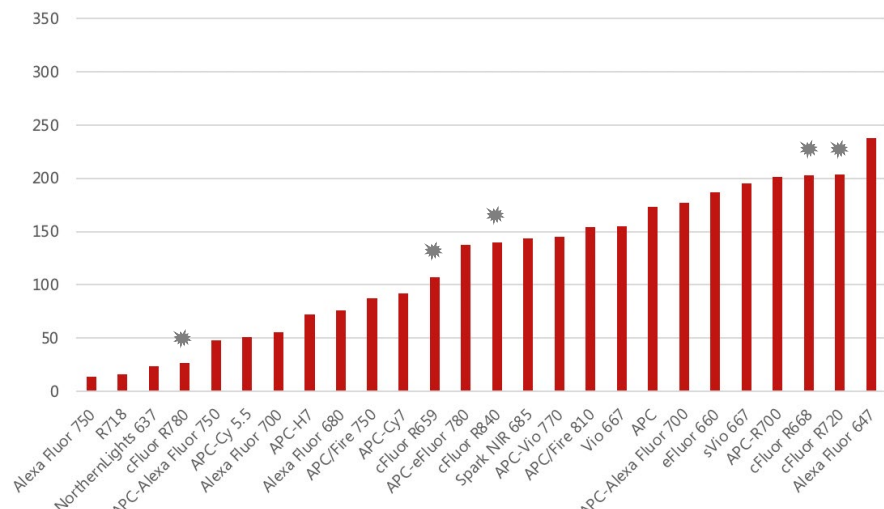
## Stain Index Blue Excitable Dyes



## Stain Index Yellow-Green Excitable Dyes

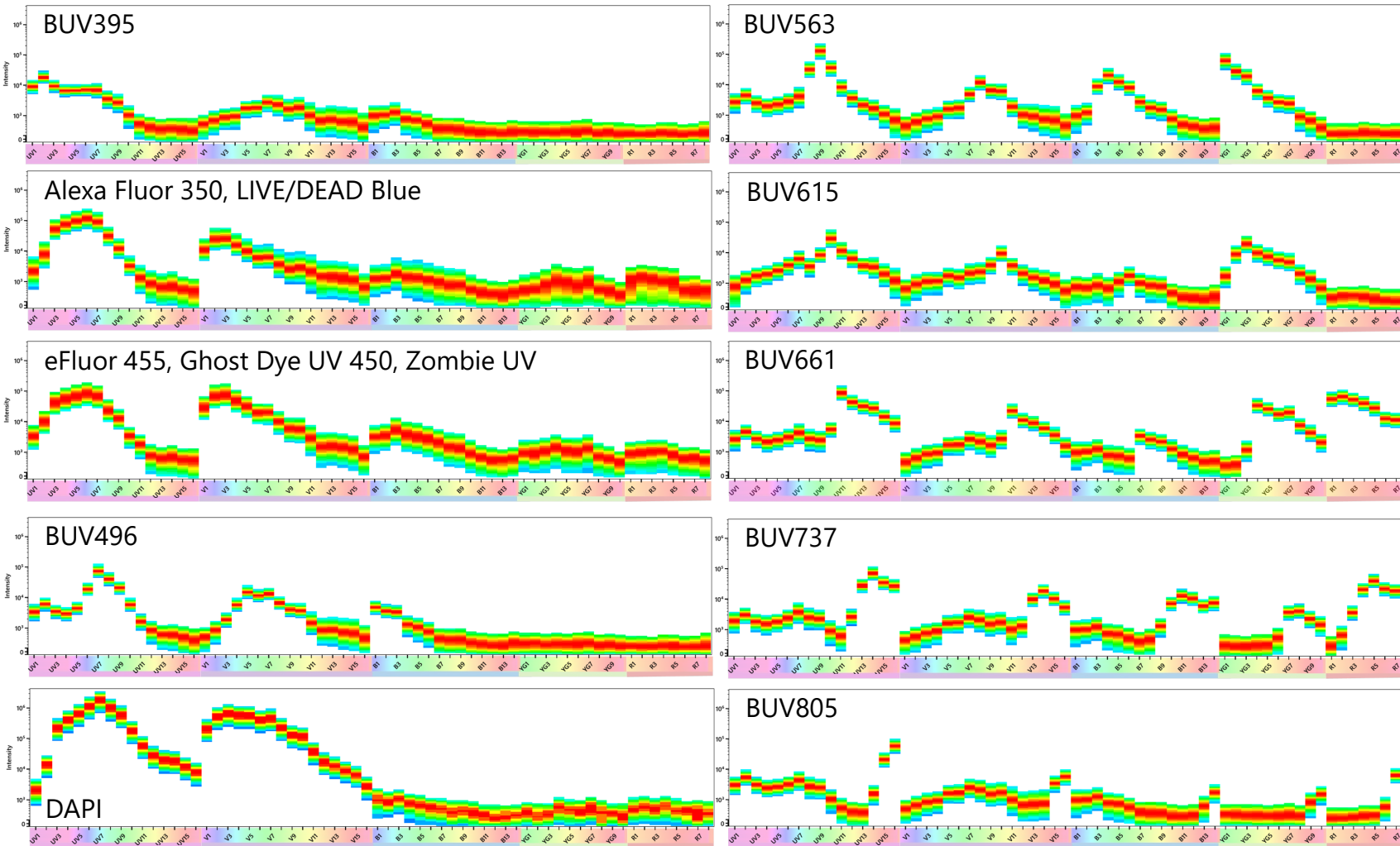


## Stain Index Red Excitable Dyes

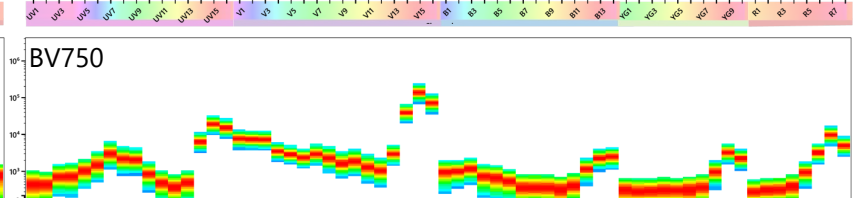
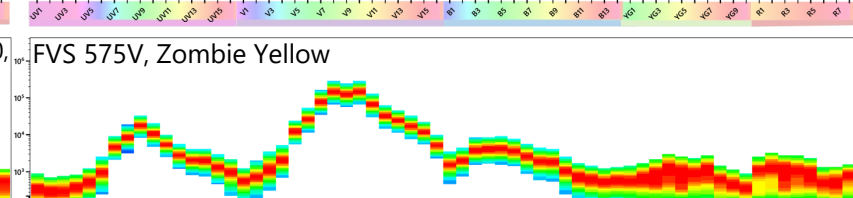
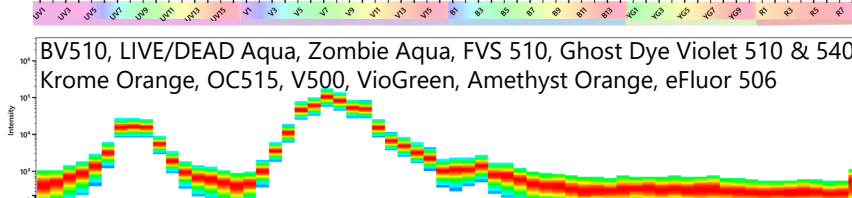
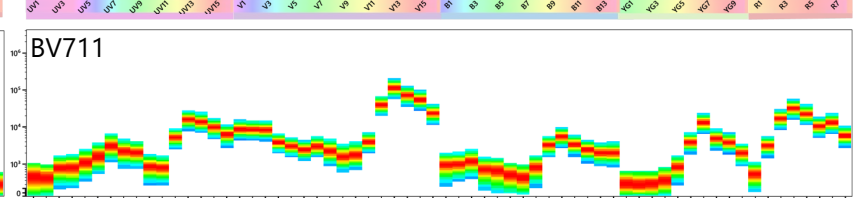
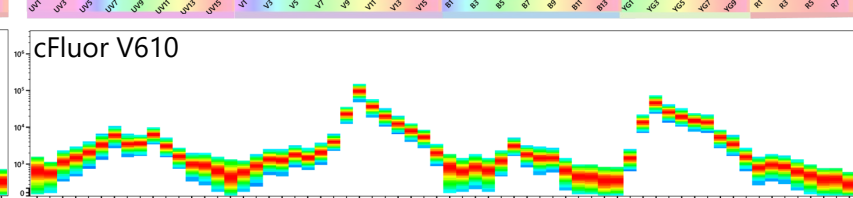
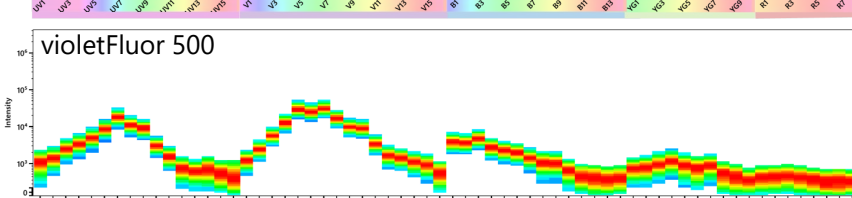
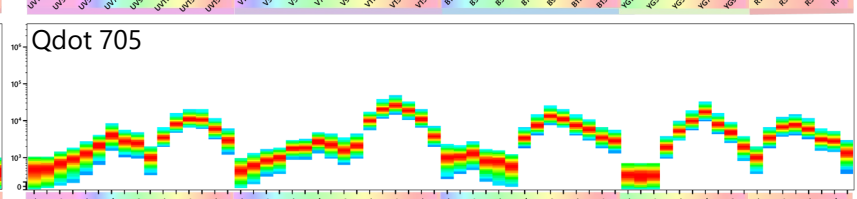
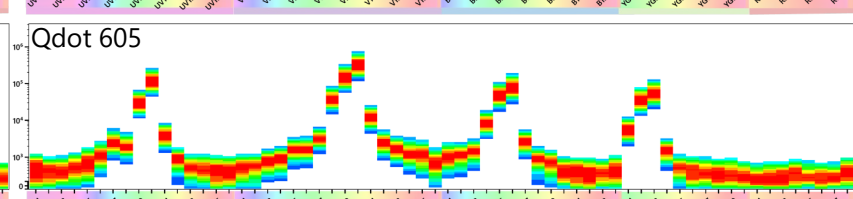
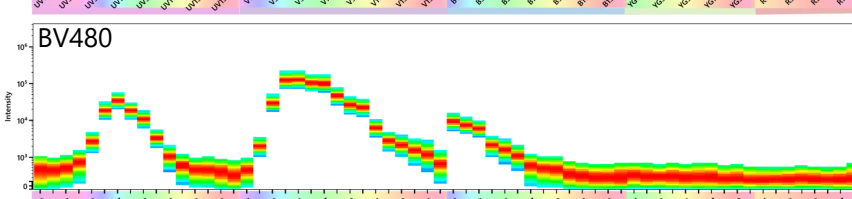
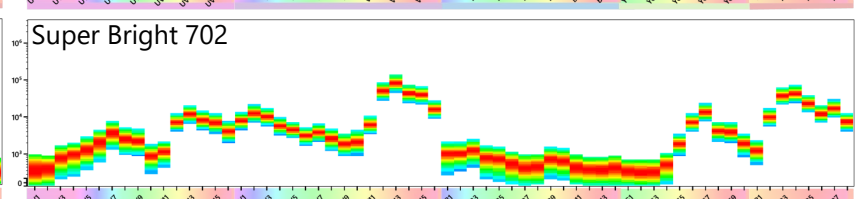
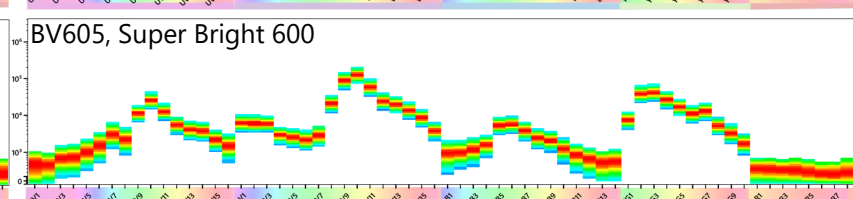
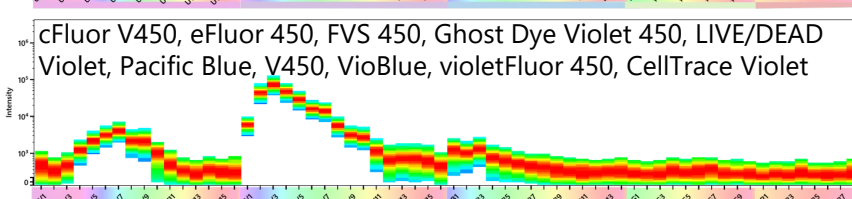
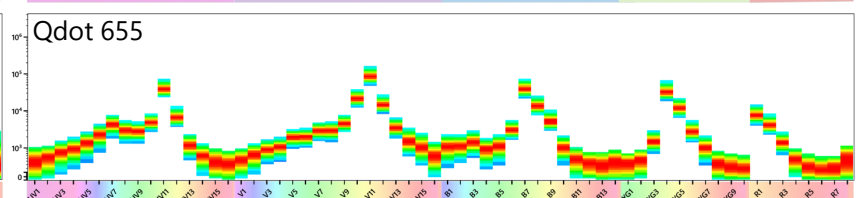
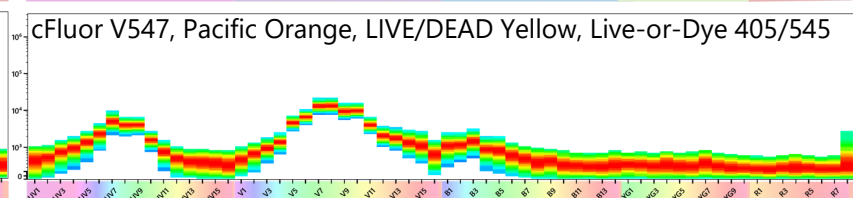
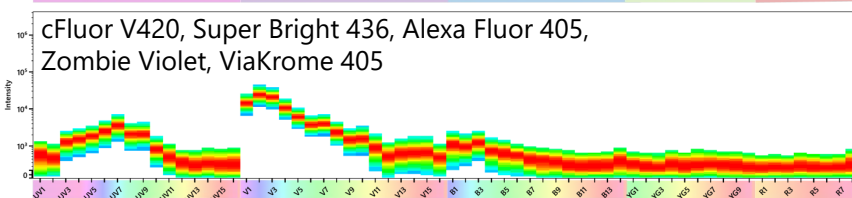
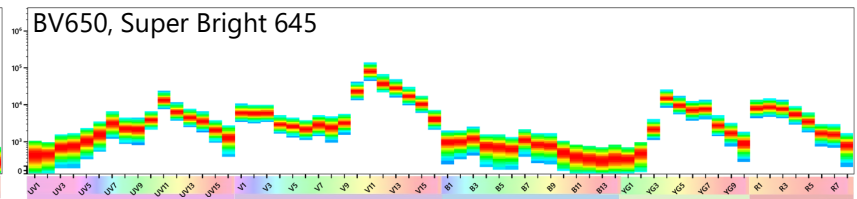
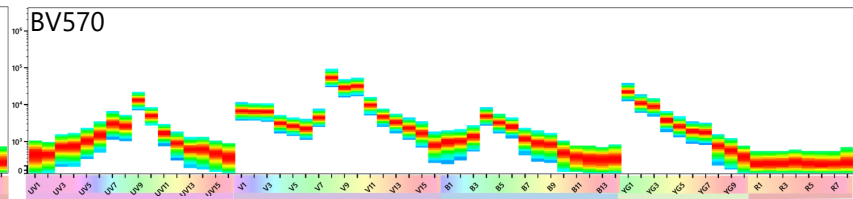
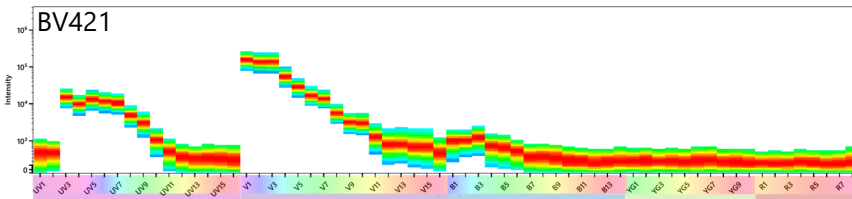


\* Denotes Cyttek cFluor

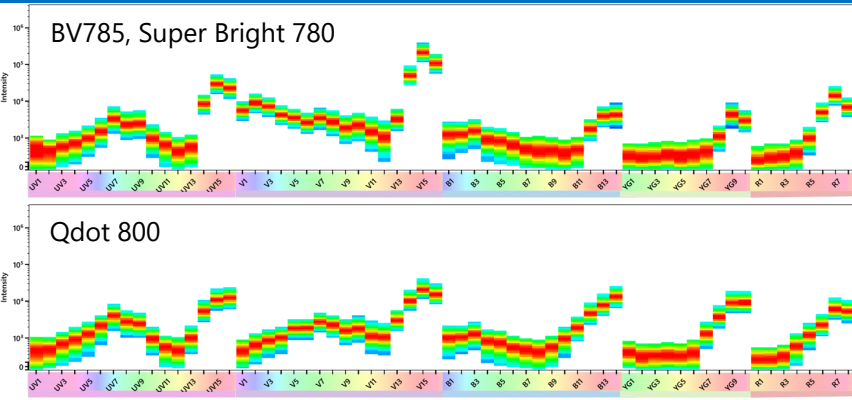
# Ultraviolet Laser Excited Dyes with Unique Signatures



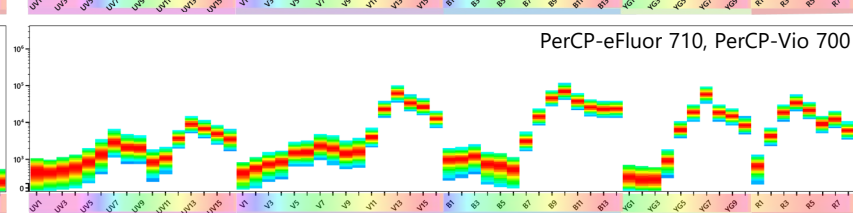
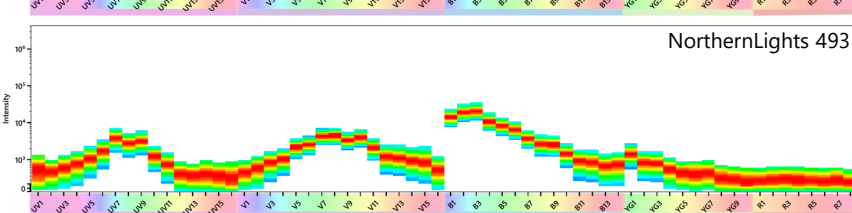
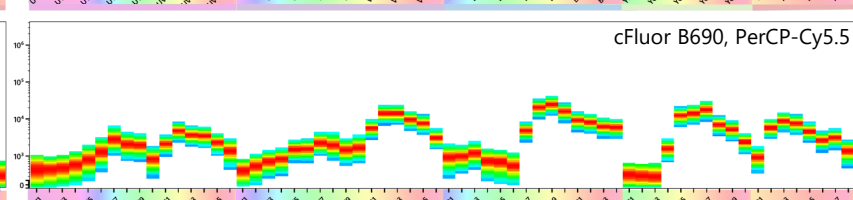
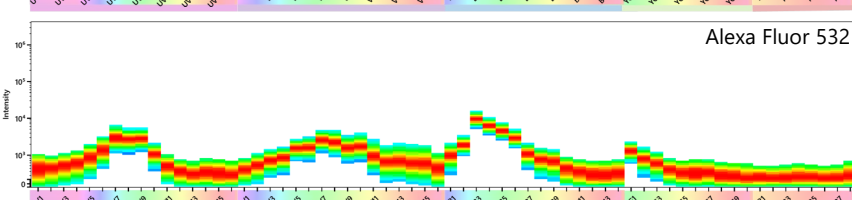
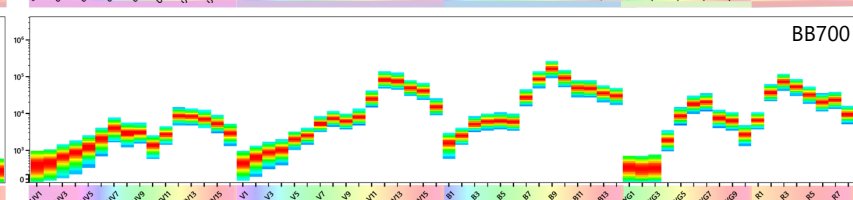
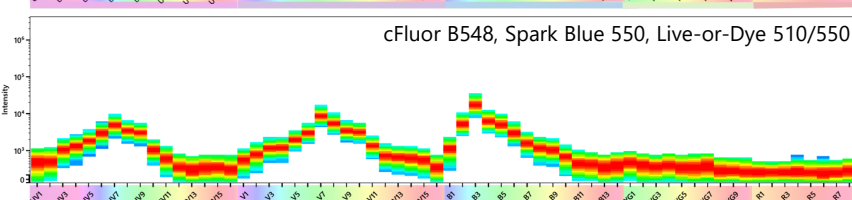
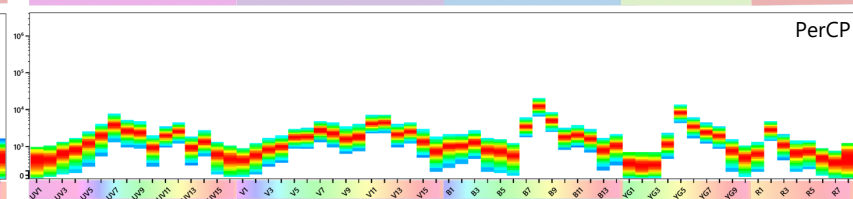
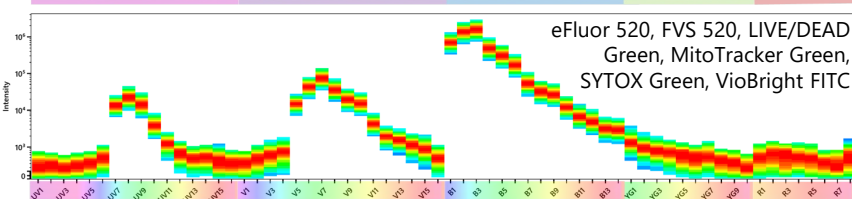
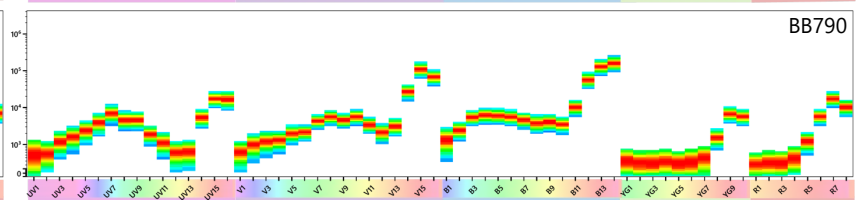
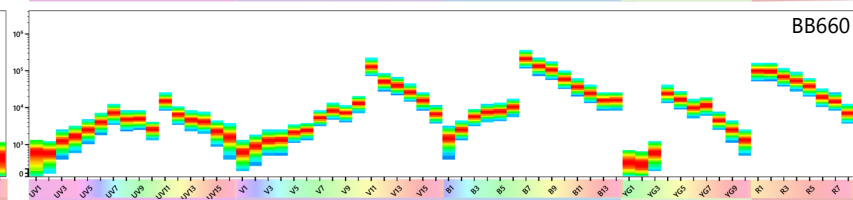
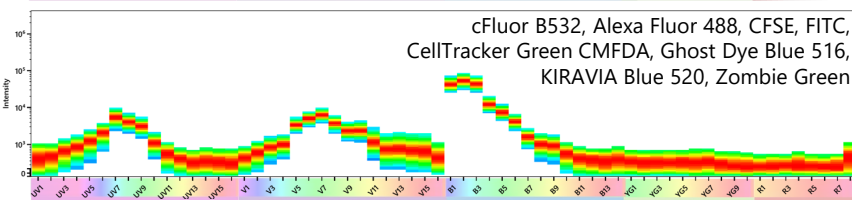
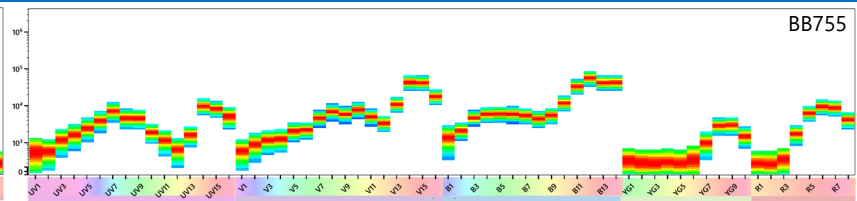
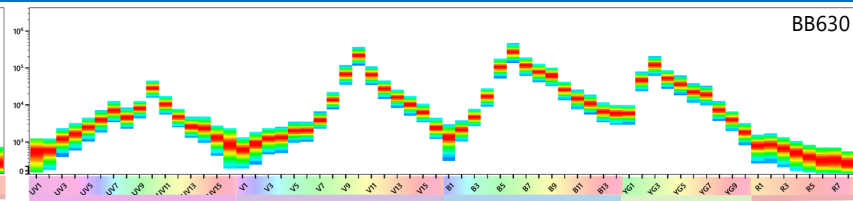
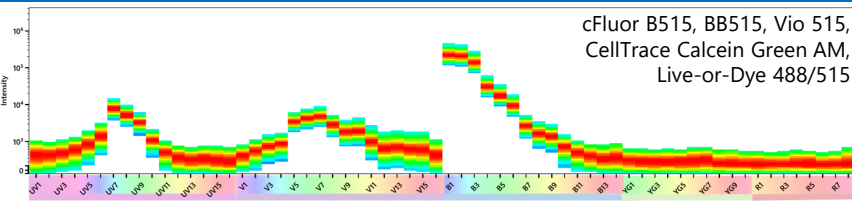
# Violet Laser Excited Dyes with Unique Signatures (1 of 2)



# Violet Laser Excited Dyes with Unique Signatures (2 of 2)

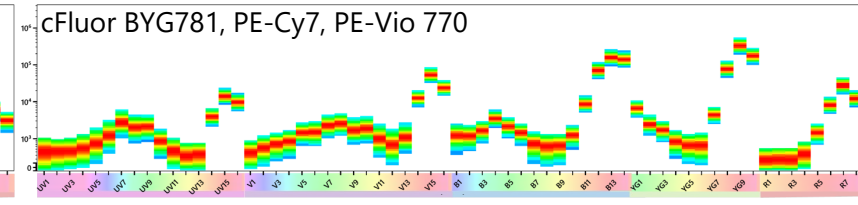
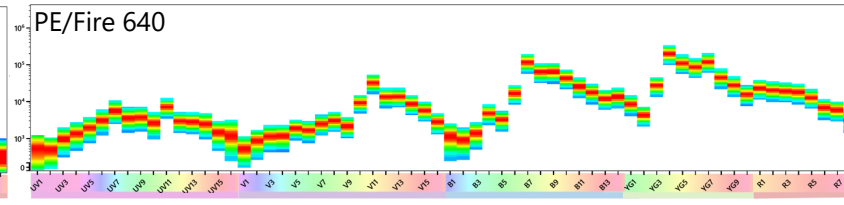
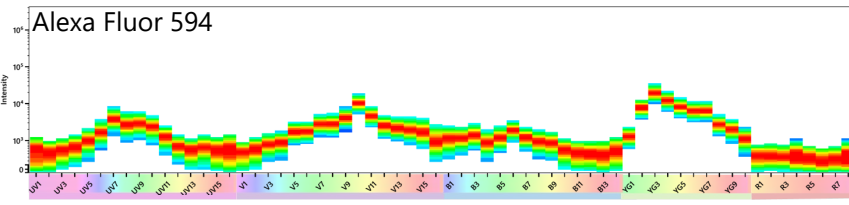
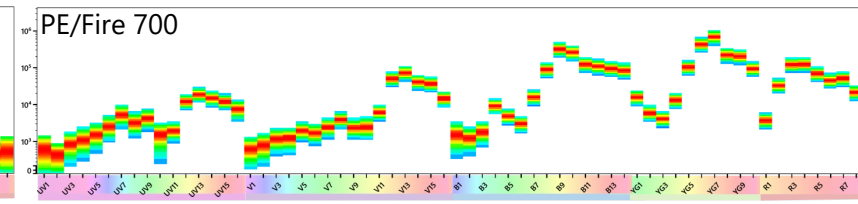
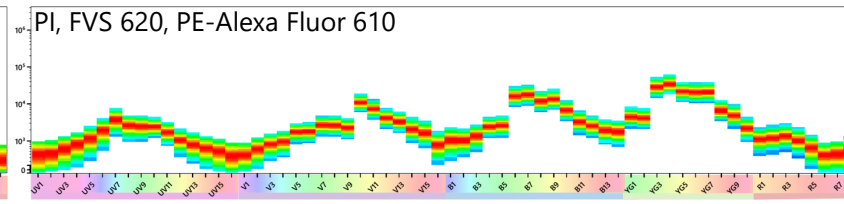
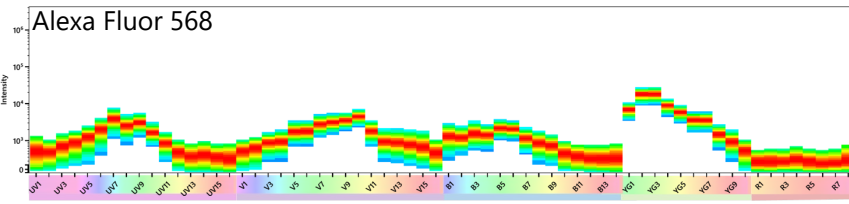
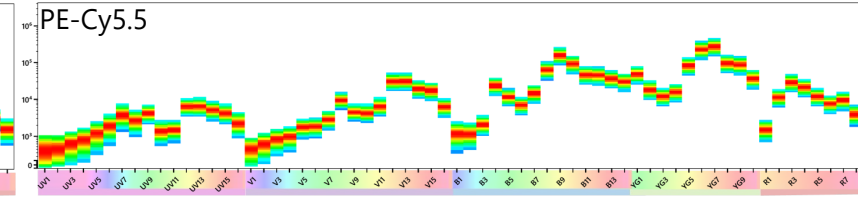
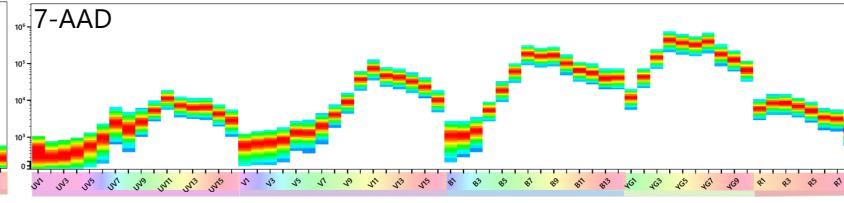
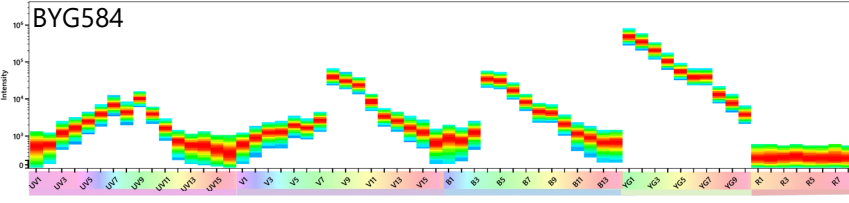
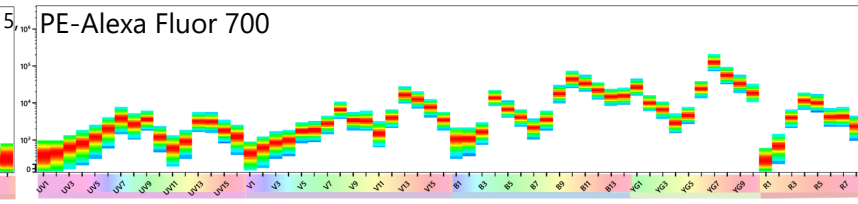
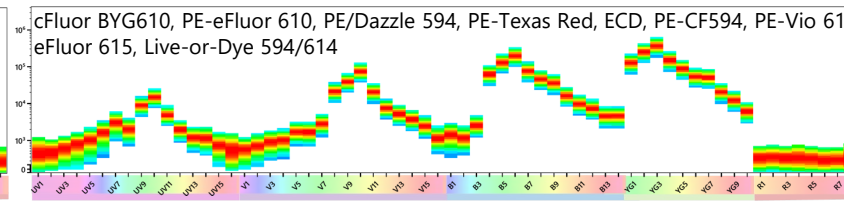
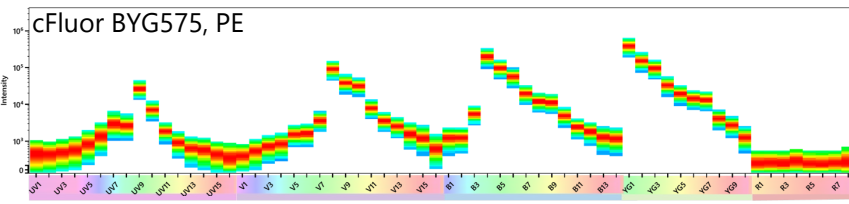
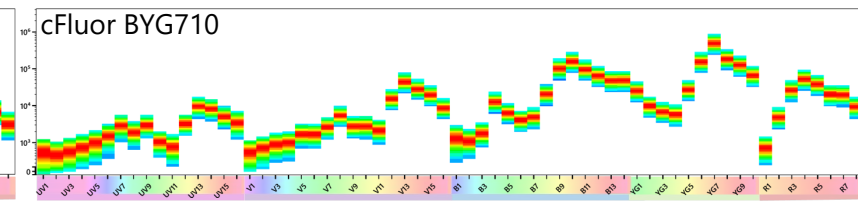
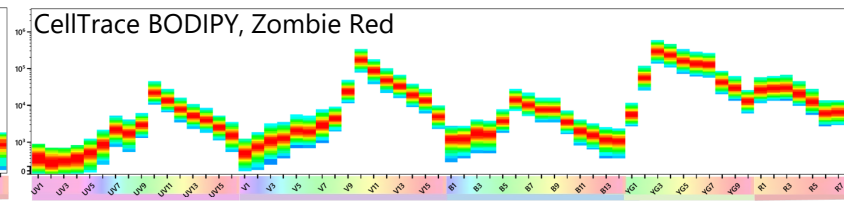
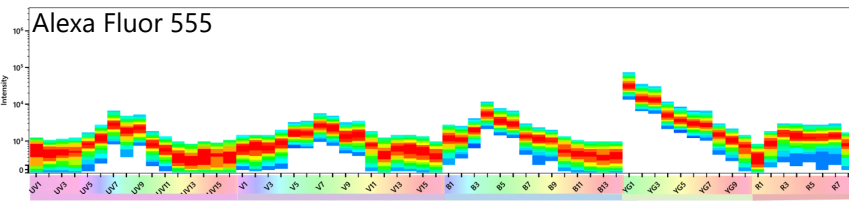
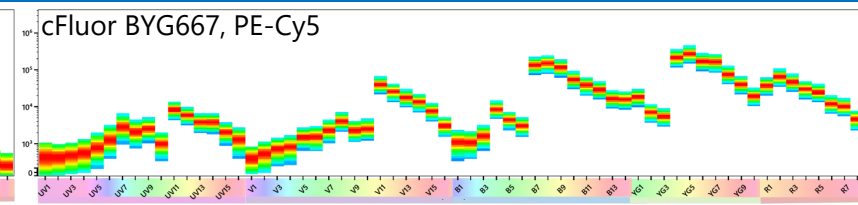
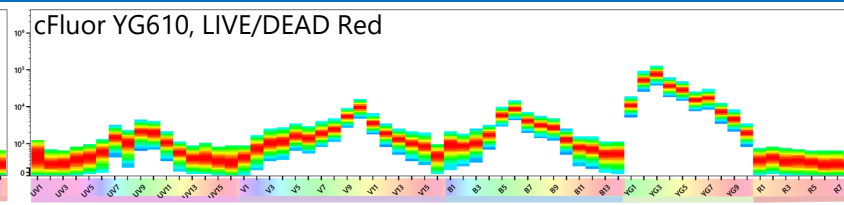
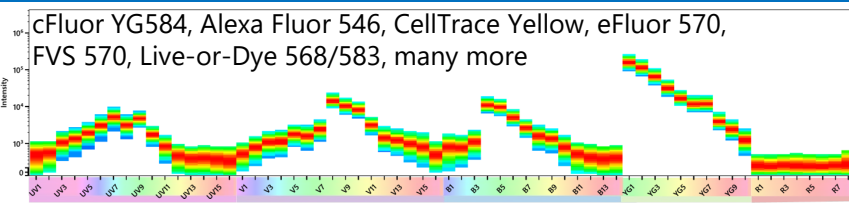


# Blue Laser Excited Dyes with Unique Signatures



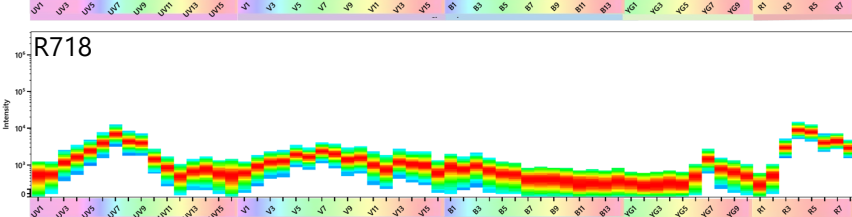
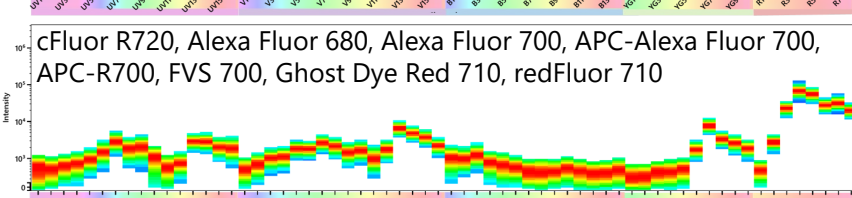
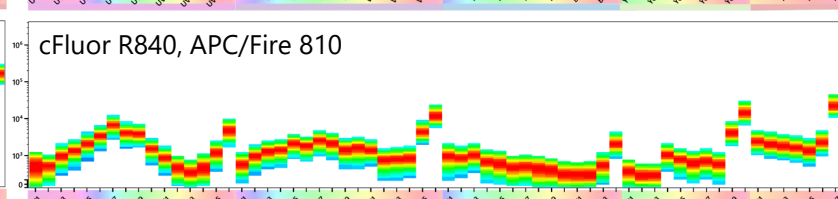
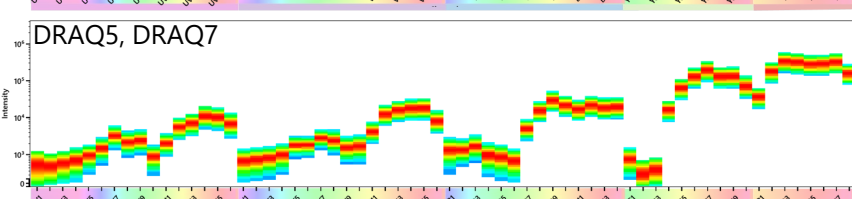
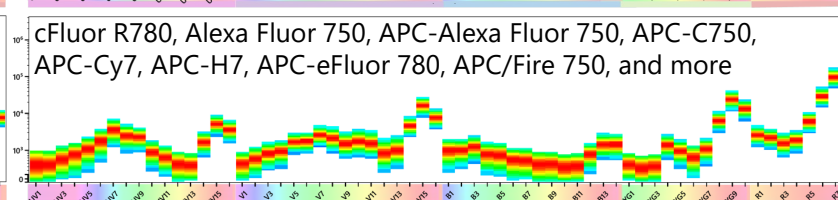
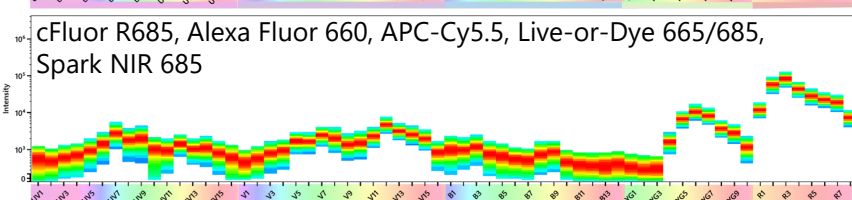
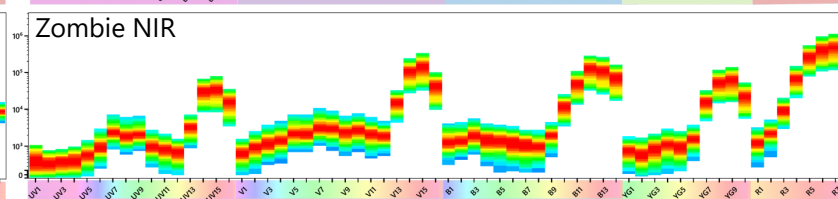
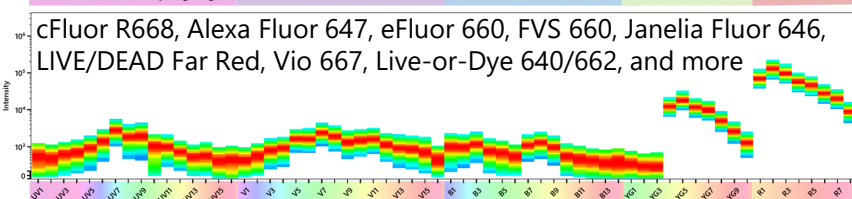
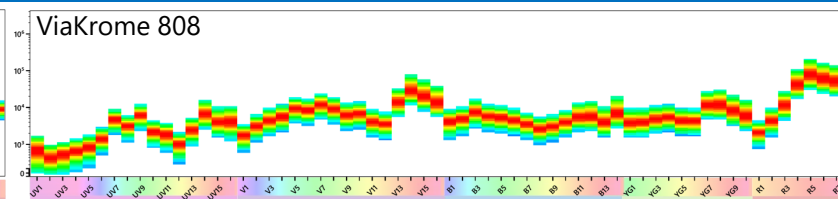
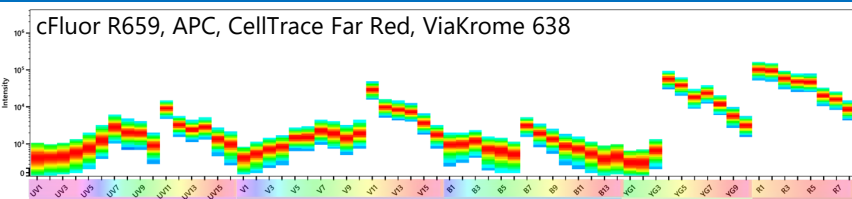


# Yellow-Green Laser Excited Dyes with Unique Signatures

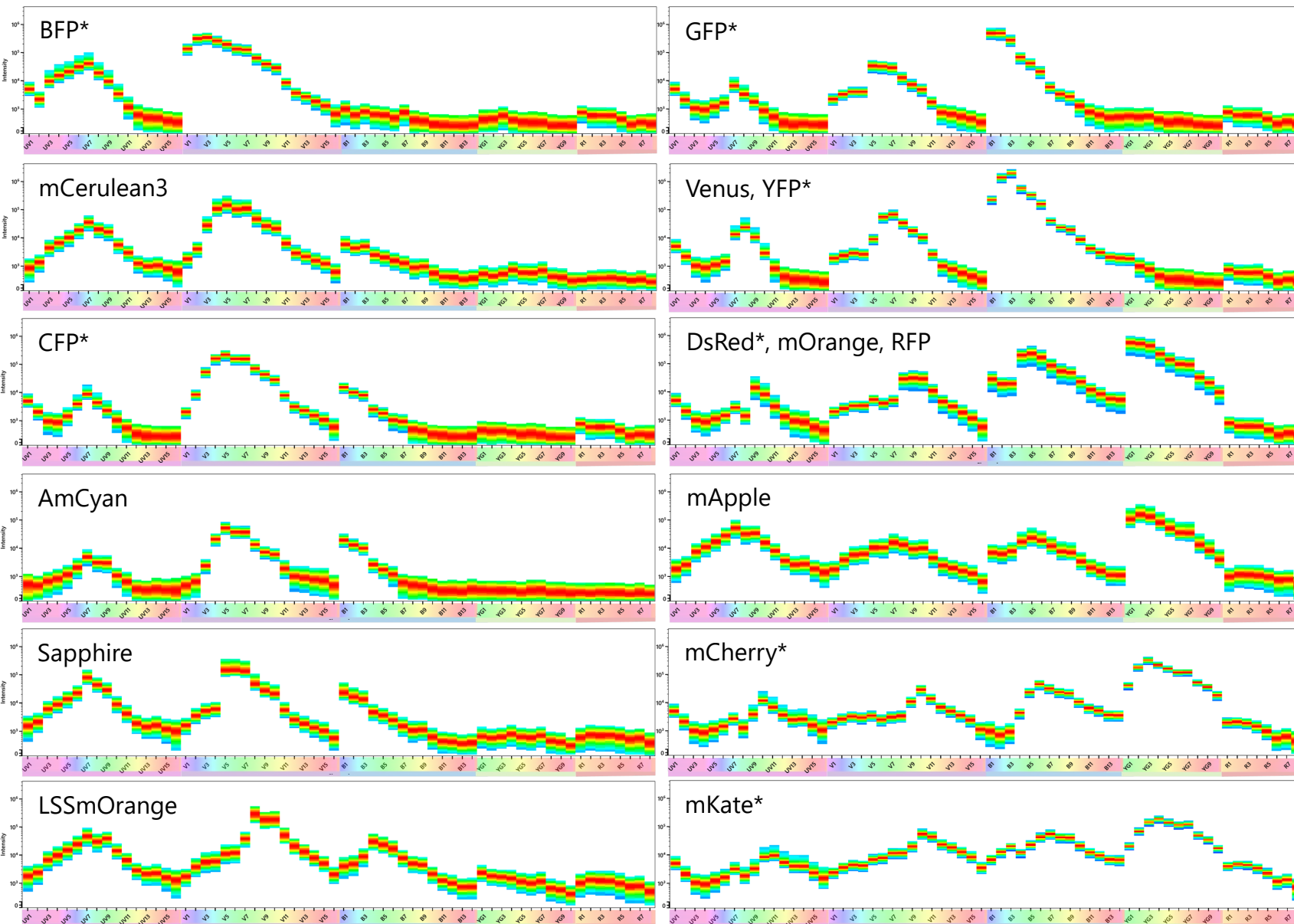




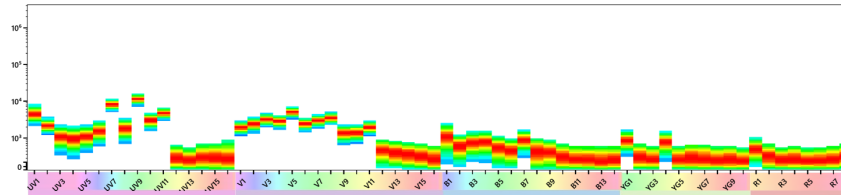
# Red Laser Excited Dyes with Unique Signatures



# Fluorescent Proteins with Unique Signatures



\*Beads were used to generate these spectrum plots. The beads have a lot of autofluorescence in many UV and Violet channels, as shown below in the spectrum plot for the unstained bead:



Peak Channel	UV Excited Fluorochromes
UV2	BUV395
UV6	Alexa Fluor 350, LIVE/DEAD Blue, eFluor 455, Ghost Dye UV 450
UV7	BUV496, DAPI, Zombie UV
UV9	BUV563
UV10	BUV615
UV11	BUV661
UV14	BUV737
UV16	BUV805

Peak Channel	Violet Excited Fluorochromes
V1	BV421
V2	cFluor V420, Super Bright 436, Alexa Fluor 405, Zombie Violet, ViaKrome 405
V3	cFluor V450, eFluor 450, Pacific Blue, V450, VioBlue, BFP, LIVE/DEAD Violet, CellTrace Violet, Fixable Viability Stain 450, Ghost Dye Violet 450, violetFluor 450
V5	BV480, AmCyan, mCerulean3, violetFluor 500
V6	CFP, Sapphire
V7	BV510, eFluor 506, Amethyst Orange, VioGreen, Zombie Aqua, OC515, V500, LIVE/DEAD Aqua, Krome Orange, Ghost Dye Violet 510 & 540, Fixable Viability Stain 510
V8	cFluor V547, BV570, Pacific Orange, LSSmOrange, LIVE/DEAD Yellow, Live-or-Dye 405/545
V10	cFluor V610, BV605, Qdot 605, Super Bright 600, Zombie Yellow, Fixable Viability Stain 575V
V11	BV650, Qdot 655, Super Bright 645
V13	BV711, Qdot 705, Super Bright 702
V14	BV750
V15	BV785, Qdot 800, Super Bright 780

Peak Channel	Blue Excited Fluorochromes
B1	cFluor B515, Vio 515, BB515, CellTrace Calcein Green AM, Live-or-Dye 488/515
B2	cFluor B532, Alexa Fluor 488, CFSE, CellTracker Green CMFDA, FITC, GFP, Ghost Dye Blue 516, Kiravia Blue 520, Zombie Green
B3	cFluor B548, Alexa Fluor 532, eFluor 520, Fixable Viability Stain 520, LIVE/DEAD Green, Live-or-Dye 510/550, MitoTracker Green, Northern Lights 493, Spark Blue 550, SYTOX Green, Venus, VioBright FITC, YFP
B6	BB630, MitoSOX Red
B7	BB660
B8	PerCP
B9	cFluor B690, PerCP-Cy5.5, BB700
B10	PerCP-eFluor 710, PerCP-Vio 700
B12	BB755
B14	BB790

Peak Channel	Red Excited Fluorochromes
R1	cFluor R659, APC, CellTrace Far Red, ViaKrome 638
R2	cFluor R668, Alexa Fluor 647, eFluor 660, Fixable Viability Stain 660, Janelia Fluor 646, LIVE/DEAD Far Red, Live-or-Dye 640/662, Northern Lights 637, SYTOX Deep Red, Vio 667, VioBright 667
R4	cFluor R720, Alexa Fluor 680, Alexa Fluor 700, APC-Alexa Fluor 700, APC-R700, Fixable Viability Stain 700, Ghost Dye Red 710, R718, redFluor 710
R5	ViaKrome 808
R6	Zombie NIR
R7	cFluor R780, Alexa Fluor 750, APC-Alexa Fluor 750, APC-C750, APC-Cy7, APC-eFluor 780, APC/Fire 750, APC-H7, APC-Vio 770, eFluor 780, Fixable Viability Stain 780, Ghost Dye Red 780, LIVE/DEAD NIR, Live-or-Dye 750/777
R8	cFluor R840, APC/Fire 810

Peak Channel	Yellow-Green Excited Fluorochromes
YG1	cFluor BYG575, cFluor YG584, Alexa Fluor 546, Alexa Fluor 555, BYG584, CellTrace Yellow, Cy3, DsRed, eFluor 570, Fixable Viability Stain 570, Live-or-Dye 568/583, MitoTracker Orange, mOrange, Northern Lights 557, PE, RFP, Spark YG 570, SYTOX Orange, TAMRA, TMRE, TMRM, ViaKrome 561
YG2	mApple
YG3	cFluor BYG610, cFluor YG610, mCherry, Alexa Fluor 568, Alexa Fluor 594, CellTrace BODIPY, ECD, eFluor 615, LIVE/DEAD Red, Live-or-Dye 594/614, PE-CF594, PE/Dazzle 594, PE-eFluor 610, PE-Texas Red, PE-Vio 615, Zombie Red
YG4	7-AAD, Fixable Viability Stain 620, mKate, PE-Alexa Fluor 610, PE/Fire 640, PI
YG5	cFluor BYG667, PE-Cy5
YG6	cFluor BYG680
YG7	cFluor BYG710, PE-Alexa Fluor 700, PE-Cy5.5, PE/Fire 700
YG9	cFluor BYG781, PE-Cy7, PE-Vio 770

# SSM: OMIP-069 40 Fluorochromes - CD4 Stained Human PBMCs\*

	BUV395	LIVE/DEAD Blue	BUV496	BUV563	BUV615	BUV661	BUV737	BUV805	BV421	Super Bright 436	eFluor 450	BV480	BV510	Pacific Orange	BV570	BV605	BV650	BV711	BV750	BV785	BB515	FITC	Spark Blue 550	PerCP	PerCP-Cy5.5	PerCP-eFluor 710	PE	cFluor YG584	PE/Dazzle 594	PE-Alexa Fluor 610	PE-Cy5	PE-Alexa Fluor 700	PE-Cy7	PE/Fire 810	APC	Alexa Fluor 647	Spark NIR 685	APC-R700	APC-H7	APC/Fire 810	Sum	
BUV395		1.97	5.06	3.27	0.44	0.21	0.17	0.65	1.18	2.75	1.22	1.10	3.78	2.76	1.08	0.78	0.67	1.35	1.05	0.36	5.46	5.89	0.83	0.67	1.79	0.70	1.27	0.90	1.05	1.32	1.58	0.87	0.40	0.45	1.23	1.22	2.03	0.76	0.47	0.15	58.90	
LIVE/DEAD Blue	5.01		9.17	0.61	0.15	1.00	0.27	0.44	3.14	4.29	5.68	2.13	10.94	7.55	2.62	1.01	1.34	0.61	0.07	0.54	2.23	2.19	2.40	0.81	0.38	0.28	0.92	0.37	2.98	0.44	1.14	0.44	0.43	0.18	0.87	1.61	0.85	0.62	0.27	0.41	76.44	
BUV496	0.83	0.94		1.44	0.05	0.45	0.32	0.40	0.43	1.70	0.66	1.44	6.21	4.87	2.10	0.71	0.39	0.25	0.12	0.37	4.89	4.13	0.64	0.62	0.73	0.40	0.67	0.38	0.41	0.57	0.91	0.39	0.31	0.04	0.57	1.13	0.50	0.17	0.32	0.08	41.53	
BUV563	0.47	0.17	1.29		0.42	0.70	0.44	0.64	0.55	0.89	0.44	0.89	3.04	3.25	1.76	0.96	0.42	0.23	0.23	0.49	1.22	2.52	1.23	2.09	1.22	0.71	7.79	2.56	4.81	4.27	2.85	0.61	0.31	0.16	1.00	0.99	0.81	0.32	0.28	0.12	53.17	
BUV615	0.85	0.74	3.82			3.07	2.39	3.40	0.99	1.18	0.61	1.23	4.08	4.43	1.62	1.21	1.13	1.03	1.22	1.15	2.27	6.08	2.23	1.92	2.06	1.47	3.32	2.54	3.04	2.97	3.17	1.84	0.99	0.32	1.38	2.59	1.18	1.52	0.48	0.50	79.02	
BUV661	0.55	0.55	1.34	0.87	0.23		3.40	3.22	0.67	0.99	0.40	0.32	1.84	4.32	0.78	0.43	2.69	1.42	1.46	1.31	3.98	5.07	1.69	3.18	2.53	1.99	1.07	0.76	4.80	4.92	5.52	2.50	1.27	0.53	4.47	8.66	5.33	2.88	2.85	0.68	91.48	
BUV737	0.83	0.90	1.68	1.07	0.09	0.71		6.24	0.95	0.97	0.34	0.20	1.41	3.85	1.04	0.40	1.41	1.85	3.14	2.54	0.62	4.05	0.90	2.86	3.30	3.97	0.13	0.41	0.75	1.22	1.61	2.20	1.16	1.02	3.11	5.60	4.13	3.20	2.37	1.10	73.32	
BUV805	1.16	1.00	1.66	1.20	0.16	0.13	1.27		0.94	0.50	0.41	0.21	1.15	3.00	0.37	0.74	0.87	0.68	0.30	1.26	1.30	1.66	0.31	1.17	0.44	0.83	0.15	0.03	1.28	0.50	0.43	1.20	0.58	0.62	1.05	2.39	2.01	0.31	2.18	1.18	35.59	
BV421	0.24	0.89	1.35	0.75	0.11	0.15	0.15	0.08		9.62	5.31	2.47	6.39	5.35	1.58	0.76	0.04	0.27	0.39	0.21	0.71	0.02	0.30	0.44	0.50	0.36	0.26	0.21	0.99	0.57	0.62	0.18	0.08	0.17	0.38	0.44	0.19	0.40	0.09	0.05	43.06	
Super Bright 436	0.14	0.73	0.37	0.44	0.09	0.15	0.15	0.11	5.17		4.66	2.64	6.88	5.83	1.82	0.91	0.30	0.20	0.32	0.17	1.04	1.85	0.83	0.62	0.76	0.41	0.27	0.25	0.69	0.92	0.62	0.25	0.27	0.16	0.60	0.80	0.71	0.32	0.34	0.13	42.93	
eFluor 450	0.59	0.95	2.27	0.95	0.08	0.36	0.24	0.44	5.34	10.54		2.89	7.24	5.93	1.78	0.92	0.38	0.45	0.07	0.61	1.25	3.87	0.40	1.09	0.55	0.62	0.17	0.19	0.98	1.03	0.44	0.64	0.12	0.08	0.98	1.48	0.89	0.24	0.58	0.45	58.07	
BV480	0.34	0.80	3.44	1.92	0.39	0.22	0.07	0.26	1.99	3.82	2.50		12.68	11.33	4.71	2.50	0.65	0.62	0.50	0.49	6.62	7.16	1.89	0.78	0.38	0.27	1.29	0.51	1.21	0.54	0.40	0.15	0.29	0.18	0.41	0.71	0.55	0.33	0.39	0.15	73.46	
BV510	0.24	0.78	2.22	2.35	0.63	0.54	0.07	0.65	1.30	2.55	1.76	2.36		9.87	5.17	3.37	1.37	0.83	0.89	0.98	5.56	5.49	2.14	1.31	1.06	0.30	1.39	0.49	2.52	1.36	0.17	0.34	0.35	0.28	0.23	0.94	1.17	0.60	0.34	0.39	64.35	
Pacific Orange	0.18	2.13	2.89	1.24	0.57	0.32	0.81	0.62	1.85	2.81	0.31	2.40	2.67		5.13	3.77	2.12	1.01	0.95	1.99	5.31	2.92	2.45	3.06	2.15	0.90	1.41	0.68	2.71	3.50	0.71	0.78	0.61	0.18	1.17	1.08	1.96	0.77	0.11	1.56	67.79	
BV570	0.48	0.95	1.49	1.63	0.71	0.42	0.38	0.58	2.00	2.89	1.75	1.26	3.67	4.99		3.30	1.61	0.46	1.01	0.66	4.92	6.49	2.24	1.77	1.27	0.37	3.44	1.51	4.23	3.34	2.20	1.03	0.10	0.32	0.77	2.16	0.31	0.72	0.12	0.29	67.84	
BV605	0.17	0.75	0.99	0.59	0.84	1.00	0.85	1.04	1.16	1.67	0.86	0.78	4.05	5.73	2.21		2.28	1.23	1.49	1.60	6.23	7.50	2.69	1.86	1.51	1.25	2.94	2.44	5.30	3.94	3.15	1.53	0.87	0.37	1.43	2.66	1.65	0.89	1.01	0.30	78.79	
BV650	0.14	0.95	1.72	1.14	0.34	1.20	0.96	1.18	1.14	2.52	1.44	0.78	3.50	1.93	0.76	0.83		1.87	2.18	2.01	2.87	3.58	1.23	1.53	1.39	0.93	0.97	0.59	3.43	3.14	2.97	1.42	0.78	0.34	2.34	4.38	2.98	1.54	1.54	0.53	65.07	
BV711	0.22	0.79	1.06	0.67	0.17	0.46	1.83	2.28	1.42	2.53	1.21	0.79	2.02	1.13	0.93	0.81	0.95		4.05	4.16	2.16	2.37	1.07	1.27	1.90	1.96	0.49	0.09	0.15	0.99	1.24	2.96	1.16	0.53	2.00	2.89	3.44	3.08	1.92	1.18	60.33	
BV750	0.21	0.90	1.70	0.89	0.03	0.15	2.47	2.80	1.29	2.12	0.96	0.72	2.85	1.84	0.85	0.22	0.48	1.65			6.14	2.75	2.10	0.70	0.52	0.88	1.15	0.44	0.23	0.99	0.82	0.81	0.56	0.69	0.62	1.16	1.99	1.78	0.97	1.70	1.54	50.68
BV785	0.29	0.72	0.85	0.83	0.07	0.12	1.17	2.99	1.49	2.05	1.19	0.56	0.78	0.41	0.65	0.30	0.53	0.81	2.93		1.52	0.90	0.64	1.06	0.61	0.39	0.23	0.09	0.96	0.74	0.86	0.30	0.71	0.50	0.83	1.58	1.37	0.05	1.88	2.11	36.04	
BB515	0.15	0.53	0.73	0.51	0.38	0.12	0.08	0.10	0.36	0.84	0.66	0.89	5.22	7.12	2.27	1.67	0.56	0.47	0.49	0.74			21.91	4.37	1.02	0.72	0.73	1.05	0.69	2.46	1.52	1.19	0.54	0.33	0.26	0.55	1.09	0.70	0.17	0.24	0.07	63.48
FITC	0.22	0.53	1.25	1.05	0.44	0.22	0.45	0.20	0.60	1.30	0.73	0.66	4.24	7.20	2.21	1.71	0.57	0.67	0.60	1.05	18.20		3.58	0.29	0.47	1.13	1.08	0.97	2.53	2.17	1.23	0.33	0.19	0.26	1.10	0.60	0.71	0.60	0.39	0.44	62.21	
Spark Blue 550	0.65	0.70	2.29	3.78	2.54	1.33	2.27	0.98	0.33	1.79	2.07	0.17	6.47	8.24	3.85	1.07	1.03	0.42	0.74	0.49	12.41	16.94		2.69	2.09	1.48	3.67	2.47	3.80	2.43	2.41	0.37	0.12	0.61	0.41	3.34	2.04	1.73	0.54	0.13	100.89	
PerCP	0.58	0.27	5.15	2.60	0.25	1.24	1.22	1.01	1.10	4.52	2.00	1.29	3.74	3.85	0.82	1.54	2.86	1.54	1.03	1.28	1.38	4.87	0.69		5.34	2.82	2.00	1.45	7.45	7.81	7.90	1.65	1.07	0.84	3.21	4.03	2.71	2.12	1.27	0.89	97.38	
PerCP-Cy5.5	0.69	1.50	3.48	2.23	0.45	1.10	1.86	2.41	0.92	3.31	0.82	0.60	3.44	2.26	0.43	1.52	2.75	2.83	2.79	2.56	0.45	5.08	1.04	9.87		5.90	1.51	1.46	6.44	7.63	7.47	4.91	2.60	1.44	3.03	6.52	6.05	3.34	3.28	1.15	117.14	
PerCP-eFluor 710	0.36	1.02	1.49	1.03	0.21	0.66	1.78	2.06	0.76	1.31	0.48	0.11	3.00	3.20	1.32	0.23	1.53	4.24	3.60	3.30	4.15	4.85	1.74	6.61	7.36		0.56	0.81	3.36	3.78	3.71	8.49	2.95	1.92	2.48	4.98	5.57	4.18	2.93	1.36	103.48	
PE	0.17	0.37	0.58	1.16	0.54	0.36	0.13	0.18	0.34	0.45	0.39	0.45	2.44	3.04	2.46	1.62	0.76	0.40	0.36	0.38	3.52	3.91	1.83	2.85	1.72	1.12		3.62	6.60	5.90	3.86	0.94	0.50	0.26	0.92	1.65	0.78	0.37	0.39	0.09	57.41	
cFluor YG584	0.12	0.22	1.39	1.48	1.75	1.11	0.73	0.22	0.76	1.14	0.46	0.20	2.07	1.92	1.38	0.95	0.60	0.38	0.45	0.16	1.12	1.95	0.41	1.70	1.38	0.99	4.13		2.83	3.55	2.38	1.24	0.71	0.33	1.0							

# SSM: 40C with cFluors Dyes\* (see page 19)

	BUV395	LIVE/DEAD Blue	BUV496	BUV563	BUV615	BUV661	BUV737	BUV805	cFluor V420	BV421	cFluor V450	BV480	BV510	cFluor V547	BV570	BV605	BV650	BV711	BV750	BV785	cFluor B515	FITC	cFluor B548	PerCP	PerCP-Cy5.5	PerCP-eFluor 710	PE	cFluor YG584	cFluor BYG610	PE-Alexa Fluor 610	cFluor BYG667	cFluor BYG710	PE-Cy7	PE/Fire 810	APC	cFluor R668	cFluor R685	APC-R700	APC-H7	APC/Fire 810	SUM	
BUV395		3.62	6.10	1.60	1.11	0.30	0	0	3.60	2.71	0.39	2.00	5.50	4.82	1.05	0.61	0	0.35	0	0	0	0	0	0.23	0.37	0.67	0.94	0.22	0	0	0.27	0	0.19	0.31	0.25	0.94	0	0.48	0.12	0.47	39.23	
LIVE/DEAD Blue	1.80		9.73	2.83	0.61	0	0	0.93	6.87	3.90	5.31	3.52	12.68	11.43	3.51	1.37	0.78	0	0	0	0	0	0.80	0	1.38	0.96	0.75	0.64	1.15	0.63	0	0	0	0.42	1.41	2.63	2.36	0	0.21	0	78.61	
BUV496	0.76	1.82		3.81	1.73	0.76	0.65	0.70	1.69	1.37	0.77	4.02	13.83	10.67	3.08	1.64	0.19	0	0.34	0.31	9.99	10.45	2.65	0.54	0	0	1.17	0.95	0.66	0	0.59	0	0	0.14	0.36	0	0.34	0.23	0.18	0	76.42	
BUV563	0.64	0.28	1.37		2.97	1.60	1.11	1.02	0	0	0	2.15	6.06	4.96	1.75	0.96	0.44	0.31	0	0.28	2.59	2.71	1.87	1.38	1.03	0.74	2.91	2.66	2.37	2.08	1.74	0.58	0.24	0.32	1.00	1.34	0.60	0.41	0.22	0.11	52.79	
BUV615	0.66	0.60	0	2.92		3.42	3.49	3.69	0.84	0.75	0.12	0.59	2.27	1.67	0.36	1.84	1.20	0.99	1.10	0.78	0	1.41	0.62	2.44	2.03	1.71	1.95	1.64	2.82	3.42	3.26	1.94	0.98	0.57	2.63	3.36	2.57	1.46	0.51	0.45	63.06	
BUV661	0.75	0.91	0.81	0.85	1.01		5.93	6.36	0.73	0.61	0	0.38	2.17	1.43	0	0.54	2.39	1.58	1.75	1.35	0.93	1.42	0.43	2.59	2.15	2.07	0.49	0.90	1.79	2.28	3.26	2.53	0.95	0.59	6.37	10.23	7.75	3.44	1.74	1.20	82.67	
BUV737	1.03	0.68	0	0	0	1.28		12.96	0.57	0.35	0	0	0	0	0	0.35	0.39	2.15	2.73	2.33	1.25	0	0	1.88	2.38	3.75	0.32	0	0	0.71	1.05	2.85	0.97	1.06	2.12	4.26	4.81	4.87	2.57	1.88	61.55	
BUV805	1.77	1.34	1.87	0	0.45	0.24	3.28		1.48	1.03	0.19	0.90	1.76	1.70	0.59	0.14	0.30	0	0.99	2.07	0	0	0	1.13	1.19	1.33	0.57	0	0	0	0	0.51	0.61	0.64	0	0.86	0.90	1.10	1.62	1.96	32.52	
cFluor V420	0.42	1.39	3.00	0	0.86	0.25	0	0		8.94	6.89	4.03	7.84	5.93	2.31	1.13	0	0.55	0.54	0.39	4.60	4.44	0	0	0	0	0	0.84	1.02	0.86	0	0	0	0	0.84	1.33	0	0	0.50	0	58.89	
BV421	0.68	2.03	4.93	2.27	0.49	0.07	0	0.19	14.42		6.73	4.47	10.32	8.27	2.66	1.01	0	0.23	0.10	0	2.48	2.69	0.79	0.09	0.31	0.14	0.42	0.66	0	0	0.09	0.21	0	0	0.25	0	0	0	0	0	66.96	
cFluor V450	0	1.32	4.87	1.04	0.30	0.31	0	0	11.68	6.48		4.81	11.98	9.40	3.01	1.47	0.26	0	0	0	0	1.70	0	0.41	1.03	0.78	0	0	0	0	0.96	0	0	0	0	0	0	0.94	0.50	0	0.35	63.58
BV480	0.43	1.55	8.73	4.96	1.53	0.57	0.34	0	3.45	2.12	2.89		19.59	17.25	6.70	3.14	0.89	0.37	0.54	0.08	13.09	14.04	3.51	0.33	0.66	0.55	1.33	1.71	1.07	0.68	0.64	0.26	0	0.20	0.41	0	0.34	0	0	0.18	114.13	
BV510	0.36	0.76	8.55	5.23	2.45	1.20	1.33	1.47	2.58	1.60	1.98	4.55		14.20	6.87	3.46	1.55	0.88	1.22	1.02	2.59	2.79	1.19	0.54	0	0.57	1.33	1.61	1.33	1.40	1.00	0.35	0	0	0.83	1.78	0.98	0.43	0.22	0.19	80.41	
cFluor V547	0.38	0	0	3.01	1.92	1.10	0.89	1.08	0	0	0	2.52	9.50	8.27	4.30	2.20	1.20	1.53	1.37	2.11	4.38	0	1.13	0	0	0	0.57	1.33	1.61	1.72	0.84	0.47	0	0	0.40	1.64	1.71	0.96	0	0.56	56.83	
BV570	0.34	0	0	4.36	2.11	1.16	0.86	0.98	4.92	2.95	2.18	1.16	2.84	2.13		3.71	1.89	1.05	0.97	0.89	2.06	1.88	0	1.79	1.36	0.90	2.73	2.37	2.88	2.74	2.19	0.93	0.57	0.22	1.86	3.39	1.74	0.71	0	0	64.81	
BV605	0	0	0	2.93	3.06	2.34	1.99	2.36	3.07	1.96	1.47	1.16	3.42	2.65	2.24		2.81	1.66	1.79	1.62	0.82	2.25	0.72	2.28	2.00	1.67	2.23	2.23	3.15	3.36	3.08	1.87	0.95	0.62	2.11	3.50	2.04	1.05	0.34	0.32	73.15	
BV650	0.07	0.11	0	0.36	1.08	2.59	2.41	2.56	3.66	2.20	1.29	1.12	1.20	1.70	0	1.72		2.42	2.47	2.26	0	0	0	1.72	2.15	1.71	0.39	0.70	1.47	1.74	1.97	1.71	0.67	0.41	2.99	5.08	3.68	1.67	0.69	0.55	58.55	
BV711	0.43	0	0	0	0.28	0.91	4.32	5.39	3.83	2.43	1.80	1.01	2.13	2.03	0.78	0.41	0.89		5.19	4.64	0	0	0	1.71	2.42	2.48	0.50	0.53	0.66	0.85	1.34	2.59	1.12	0.81	2.01	4.24	4.22	3.43	1.82	1.34	68.55	
BV750	0.43	0	0	0.95	0	0.52	5.22	6.09	2.67	1.76	1.01	0.86	1.22	0.89	0.57	0	0	1.71		6.69	0	0	0	0.68	0.97	1.47	0	0	0.27	0.10	0	1.18	1.01	0.93	0.94	1.70	2.18	2.14	1.54	1.15	46.82	
BV785	0.44	0	0	0	0	0.18	2.75	7.38	3.29	2.07	1.51	0.78	1.53	1.08	0.39	0	0	0.56	3.18		0	0	0	0.94	0.99	0.97	0.37	0	0.31	0.62	0.57	0.58	0.94	0.81	0.87	1.00	0.85	1.04	1.59	1.42	38.99	
cFluor B515	0.08	0	3.41	1.84	0.66	0.31	0	0	0.45	0.36	1.11	1.41	9.31	9.65	2.90	1.38	0.38	0.09	0	0		53.53	13.39	1.05	0	0.29	3.55	3.23	2.35	1.72	1.50	0.38	0	0	0.43	0	0.75	0.27	0.16	0	115.93	
FITC	0.35	0.78	2.24	0.99	0	0	0.32	0	0	0.40	0.82	0.22	7.51	8.60	3.00	1.09	0	0.45	0	0	43.18		12.31	1.50	0.80	0.68	4.22	4.13	2.74	1.93	1.73	0.11	0	0.27	0	1.12	0.99	0.49	0	0	102.97	
cFluor B548	0.47	0	0.48	2.03	0.91	0.57	0	0.30	0	0.60	0	0.57	5.66	8.62	4.20	2.17	1.18	0.87	0.76	0.72	14.33	17.34	2.82	1.94	1.34	4.44	4.28	3.27	2.65	2.71	0.85	0.54	0.52	1.45	2.58	1.76	0.67	0.20	0	93.80		
PerCP	0	0	0	0	0	2.57	3.48	2.99	2.10	2.90	0	0	1.12	0	1.12	0	3.30	0	1.20	1.23	2.71	3.30	1.21		5.97	0	0.91	1.46	2.67	3.48	7.02	0	1.25	0	4.61	6.71	5.95	1.72	0.71	0.70	71.27	
PerCP-Cy5.5	0.39	0	0	0	0	1.96	3.72	4.28	0	0	0.51	0.42	0.84	2.17	0.97	0.78	2.66	4.11	3.59	3.08	4.50	6.11	0.71	9.79		7.14	0	0.72	2.15	2.83	5.51	5.38	2.83	2.25	5.21	8.47	8.16	3.30	1.61	1.12	107.26	
PerCP-eFluor 710	0.43	0	0	0	0	1.25	3.39	4.27	0	0	0	0	0	0.26	0	0	1.49	7.06	3.91	3.66	0	0	0	6.26	8.47		0.67	0	1.39	1.78	3.31	9.28	2.98	2.64	3.51	6.55	6.46	3.72	1.75	1.39	85.88	
PE	0.16	0	0.55	2.02	0.74	0.57	0.31	0.28	0	0.22	0	0.27	1.25	1.27	2.89	1.56	0.86	0.47	0.29	0.23	2.28	2.57	0.89	2.61	1.80	1.20		9.66	5.54	4.71	3.82	1.15	0.50	0.33	1.61	3.13	1.56	0.50	0.09	0.07	57.97	
cFluor YG584	0	0.23	0	0.79	0.42	0.47	0	0.16	0	0.21	0	0	0	0	1.35	1.01	0.74	0.42	0.14	0.26	0	0	0	2.15	1.65	1.11	3.48		4.36	4.32	3.47	1.56	0.70	0.48	1.32	2.50	1.18	0.27	0.12	0	34.90	
cFluor BYG610	0.14	0.22	0	1.11	1.43	1.09	0.54	0.48	0	0.23	0.06	0	0	0	1.27	2.27	1.55	0.87	0.56	0.49	3.12	3.85	1.44	4.33	3.38	2.30	5.11	5.98		5.43	4.98	2.28	0.97	0.67	2.94	4.34	3.06	0.90	0.20	0.21	67.77	
PE-Alexa Fluor 610	0.38	0.87	0	0	1.26	1.39	1.19	1.18	0	0.59	0	0	0	0	0.44	1.71	2.29	2.02	1.29	1.15	1.78	2.22																				



# SSM: 40C with Super Bright Dyes\*

	BUV395	LIVE/DEAD Blue	BUV496	BUV563	BUV615	BUV661	BUV737	BUV805	BV421	Super Bright 436	eFluor 450	BV480	BV510	Pacific Orange	BV570	Super Bright 600	Super Bright 645	Super Bright 702	BV750	Super Bright 780	BB515	FITC	Spark Blue 550	PerCP	PerCP-Cy5.5	PerCP-eFluor 710	PE	cFluor YG584	PE/Dazzle 594	PE-Alexa Fluor 610	PE-Cy5	PE-Alexa Fluor 700	PE-Cy7	PE/Fire 810	APC	Alexa Fluor 647	Spark NIR 685	APC-R700	APC-H7	APC/Fire 810	Sum	
BUV395		1.95	5.31	3.28	0.35	0.53	0.25	0.31	0.70	3.00	1.47	1.00	4.34	3.04	0.88	1.07	0.55	0.92	0.46	0.51	4.84	4.80	1.55	0.68	1.69	0.55	1.15	0.84	0.55	1.94	1.36	0.60	0.40	0.32	1.53	1.49	1.75	0.87	0.89	0.22	57.94	
LIVE/DEAD Blue	4.92		9.08	0.40	0.11	1.07	0.29	0.22	3.22	4.53	5.52	2.17	11.06	7.73	2.79	1.10	1.35	0.45	0.38	0.22	3.20	2.26	2.42	0.85	0.59	0.52	0.67	0.36	2.90	1.36	0.79	0.43	0.47	0.09	0.62	1.64	0.99	0.53	0.50	0.41	78.19	
BUV496	0.83	0.93		1.53	0.05	0.46	0.32	0.35	0.69	1.51	0.82	1.50	6.42	5.09	2.20	0.76	0.54	0.08	0.22	0.34	5.01	4.13	0.53	0.42	0.75	0.15	0.40	0.42	0.74	0.60	0.14	0.32	0.37	0.16	0.38	1.00	0.37	0.35	0.19	0.23	41.29	
BUV563	0.45	0.61	0.64		0.39	0.68	0.47	0.67	0.65	0.49	0.41	0.93	2.90	2.73	1.65	0.98	0.60	0.39	0.20	0.05	0.68	2.58	1.24	2.11	1.14	0.62	7.63	2.51	5.28	4.28	2.99	0.57	0.26	0.11	0.71	1.11	0.36	0.41	0.40	0.04	50.91	
BUV615	0.72	0.65	3.46	3.06		2.83	3.57	2.46	0.65	1.08	0.56	1.17	4.34	4.42	1.70	0.96	1.18	0.90	0.98	0.90	2.44	7.49	2.50	2.23	2.25	1.60	3.37	2.56	3.20	2.86	3.26	1.93	0.99	0.42	1.49	3.87	3.59	1.69	0.80	0.49	84.61	
BUV661	0.55	0.57	1.46	0.94	0.23		3.37	3.19	0.77	1.29	0.54	0.29	2.08	3.91	0.76	0.28	2.59	1.46	1.12	1.05	4.04	5.21	1.65	3.20	2.49	2.10	0.91	0.80	4.68	4.82	5.59	2.49	1.29	0.56	4.58	8.51	5.45	2.77	3.03	0.79	91.42	
BUV737	0.81	0.91	1.62	1.05	0.15	0.75		6.20	0.64	0.35	0.37	0.27	1.45	2.69	0.59	0.14	1.36	2.15	2.62	1.95	1.83	3.00	0.72	3.06	3.48	4.05	0.27	0.35	0.63	1.27	1.92	2.40	1.17	1.03	3.55	6.67	5.00	3.08	2.67	1.23	73.46	
BUV805	1.19	0.97	1.33	1.19	0.14	0.01	1.23		0.74	0.55	0.15	0.26	0.32	2.42	0.37	0.68	0.59	0.46	0.49	0.95	1.24	1.54	0.43	1.26	0.67	1.20	0.26	0.27	1.28	0.36	0.33	2.29	0.56	0.61	1.05	2.27	2.24	0.11	2.07	1.34	33.45	
BV421	0.26	0.87	1.51	0.84	0.11	0.15	0.20	0.22		9.82	5.18	2.49	6.31	5.44	1.68	0.71	0.02	0.17	0.29	0.14	1.28	0.19	0.45	0.39	0.55	0.29	0.24	0.15	0.50	0.36	0.74	0.03	0.10	0.14	0.44	0.22	0.53	0.30	0.26	0.16	43.75	
Super Bright 436	0.07	0.72	0.22	0.72	0.11	0.23	0.13	0.21	5.24		4.69	2.62	6.99	5.97	1.88	0.86	0.46	0.28	0.17	0.12	1.37	2.21	0.74	0.76	0.62	0.25	0.26	0.31	0.61	0.78	0.49	0.18	0.27	0.12	0.63	0.51	0.40	0.25	0.22	0.14	42.80	
eFluor 450	0.49	0.89	1.50	1.00	0.19	0.29	0.08	0.52	5.25	10.55		2.84	7.56	5.88	1.78	0.80	0.37	0.69	0.36	0.31	1.42	3.34	0.76	0.82	0.71	0.71	0.27	0.00	1.39	1.68	0.89	0.50	0.06	0.25	1.35	0.95	1.39	0.43	0.48	0.42	59.16	
BV480	0.33	0.84	3.32	1.91	0.36	0.29	0.06	0.23	2.00	3.76	2.47		12.49	11.21	4.87	2.44	0.52	0.57	0.35	0.36	6.66	7.20	1.91	0.80	0.31	0.27	1.25	0.55	1.70	0.74	0.43	0.26	0.28	0.13	0.38	0.71	0.55	0.10	0.43	0.17	73.22	
BV510	0.23	0.83	2.69	2.29	0.60	0.54	0.24	0.80	1.45	2.45	1.75	2.65		10.53	5.19	3.27	1.33	0.73	0.80	0.70	5.41	5.74	2.10	1.18	0.79	0.16	1.41	0.57	1.94	1.46	0.37	0.34	0.28	0.18	0.78	0.68	1.36	0.34	0.31	0.45	64.92	
Pacific Orange	0.44	1.86	4.67	0.83	0.66	0.15	0.61	0.63	1.27	1.93	0.65	2.39	2.19		5.34	3.58	1.94	1.33	0.64	1.52	7.22	4.47	2.21	2.53	1.69	1.52	1.64	0.75	2.52	3.36	1.52	1.12	0.64	0.42	1.41	2.18	1.42	0.49	1.48	2.27	73.47	
BV570	0.54	0.96	1.93	1.38	0.67	0.45	0.41	0.47	2.07	2.91	1.68	1.21	3.21	5.15		3.13	1.72	0.81	0.66	0.39	5.44	6.20	2.19	1.83	1.28	0.18	3.45	1.57	4.24	3.42	2.22	0.94	0.24	0.28	1.02	1.84	0.22	0.64	0.43	0.22	67.63	
Super Bright 600	0.26	0.97	0.91	1.05	0.87	0.88	0.68	0.80	1.76	3.43	1.36	1.17	3.84	6.04	2.45		2.35	1.22	1.19	1.18	6.54	7.41	2.76	2.07	1.40	1.14	3.23	2.70	5.42	3.95	3.57	1.51	0.88	0.41	1.54	2.69	1.46	0.95	0.94	0.37	83.36	
Super Bright 645	0.32	1.36	0.91	0.72	0.33	1.03	0.93	1.00	1.40	3.04	1.18	0.86	2.19	2.43	0.97	0.46		1.74	1.65	1.51	1.76	3.28	1.19	1.14	1.81	1.10	1.25	0.67	4.51	4.57	3.25	1.72	1.08	0.26	2.34	4.40	3.04	1.72	1.67	0.76	65.50	
Super Bright 702	0.14	1.46	1.55	0.65	0.18	0.65	1.63	1.88	1.97	3.78	1.90	1.24	0.85	2.13	0.57	0.37	1.12		2.83	2.98	1.19	0.40	0.92	1.53	1.29	1.82	0.42	0.42	1.34	1.26	2.11	3.71	1.41	0.53	2.68	4.84	5.24	4.40	2.98	1.40	67.75	
BV750	0.09	0.86	1.76	0.84	0.09	0.18	2.48	2.77	1.05	2.20	0.96	0.71	2.46	1.83	0.71	0.07	0.60	1.38		4.65	2.30	0.64	0.84	0.62	1.03	1.32	0.69	0.20	0.64	0.66	0.73	0.63	0.68	0.61	1.31	2.68	2.18	0.91	1.98	1.81	48.14	
Super Bright 780	0.66	0.25	1.01	0.75	0.37	0.82	5.14	4.21	1.39	2.81	1.15	0.38	0.71	1.17	0.15	0.11	0.64	0.51	1.62		1.50	2.82	0.59	1.69	1.35	0.86	0.18	0.14	0.41	0.11	0.95	0.46	0.95	0.63	1.38	4.17	3.77	1.37	2.69	1.39	51.26	
BB515	0.14	0.54	0.42	0.43	0.33	0.13	0.10	0.09	0.32	0.96	0.66	0.89	5.02	6.90	2.21	1.51	0.43	0.25	0.54	0.66		21.51	4.05	1.07	0.65	0.66	0.97	0.70	2.18	1.57	1.30	0.59	0.32	0.25	0.33	0.62	0.54	0.16	0.06	0.11	60.19	
FITC	0.38	0.86	1.73	1.06	0.38	0.16	0.42	0.45	0.55	1.24	0.36	0.89	3.78	6.92	2.31	1.39	0.27	0.61	0.35	0.84		17.43	3.58	0.69	0.68	1.00	1.31	0.99	2.66	2.39	1.37	0.31	0.05	0.17	0.83	1.40	0.45	0.11	0.18	0.38	60.91	
Spark Blue 550	0.65	0.47	1.84	3.80	2.12	1.47	1.35	0.37	0.70	1.50	2.78	0.66	5.64	8.51	3.86	0.99	0.96	0.17	0.28	0.74		12.36	16.70	2.30	2.41	1.43	3.41	2.43	3.73	2.63	2.30	0.10	0.23	0.62	1.41	2.53	1.75	1.24	0.42	0.40	97.26	
PerCP	1.03	2.46	7.48	4.26	0.09	0.53	1.01	1.16	1.03	4.81	2.16	1.01	10.84	3.00	1.60	1.11	2.50	1.73	1.35	1.09	4.87	5.91	3.71		5.41	2.51	1.04	0.88	4.88	6.90	6.96	1.86	0.94	0.58	3.09	3.98	2.65	2.38	1.01	1.00	110.80	
PerCP-Cy5.5	0.60	1.48	3.68	2.28	0.49	1.19	1.88	2.39	1.14	3.47	0.44	0.56	1.60	1.58	1.13	1.58	2.58	2.55	2.19	2.17	1.90	3.31	0.93		9.70		5.65	1.40	1.33	6.25	7.46	7.31	5.00	2.62	1.45	3.12	6.54	6.57	3.34	3.55	1.36	113.78
PerCP-eFluor 710	0.41	1.04	1.97	1.24	0.17	0.68	1.80	2.09	0.76	0.44	0.56	0.32	2.62	3.04	1.21	0.17	1.50	3.77	2.77	2.64	3.87	4.27	1.60		6.55	7.27		0.77	0.81	3.35	3.91	3.74	8.43	2.93	1.93	2.69	5.47	6.17	4.08	3.27	1.42	101.73
PE	0.16	0.37	0.59	1.18	0.49	0.36	0.16	0.14	0.36	0.34	0.40	0.41	2.40	3.16	2.43	1.54	0.78	0.39	0.31	0.32	3.71	3.98	1.82	2.94	1.72	1.10		3.62	6.86	5.96	4.00	0.94	0.48	0.26	0.74	1.29	0.95	0.37	0.44	0.12	57.57	
cFluor YG584	0.03	0.22	1.14	1.53	1.39	1.04	0.87	0.37	0.75	0.84	0.34	0.40	2.29	2.13	1.37	0.92	0.54	0.28	0.23	0.52	1.84	1.98	0.34	1.61	1.26	1.08	4.13		2.91	3.48	2.21	1.25	0.76	0.38	0.77	1.81	1.15	0.58	0.05	0.33	45.09	
PE/Dazzle 594	0.25	0.70	0.78	0.45	1.31	0.64	0.31	0.37	0.20	0.39	0.50	1.04	5.71	7.96	2.50	2.52	1.30	0.85	0.61	0.53		8.34	9.57	4.06	4.06	3.10	2.02	5.34	2.68		6.11	4.81	2.10	1.17	0.60	1.49	2.09	2.09	1.05	0.96	0.28	90.38
PE-Alexa Fluor 610	0.45	1.22	2.85	0.54	1.11	0.90	0.51	0.70	0.61	1.16	1.37	0.97	4.54	6.49	2.38	1.73	1.54	0.81	0.09	1.02	7.47	8.71	3.43	6.16	5.27	3.12	3.83	1.79	7.65		6.88	3.83	2.17	1.07	3.47	3.80	3.53	1.58	1.65	0.66	107.07	
PE-Cy5	0.15	0.51	0.70	0.52	0.83	0.96	0.93	0.67	0.46	0.58	0.55	0.95	5.37	7.98	2.27	0.66	2.31	1.61	1.20	0.90		9.02	11.32	4.50	9.48	5.68	3.64	2.52	2.45	11.46	12.98		5.22	2.24	1.12	3.96	10.57	6.61	3.14	3.02	0.56	139.54